

Disposal Logistics for Winders

Facts

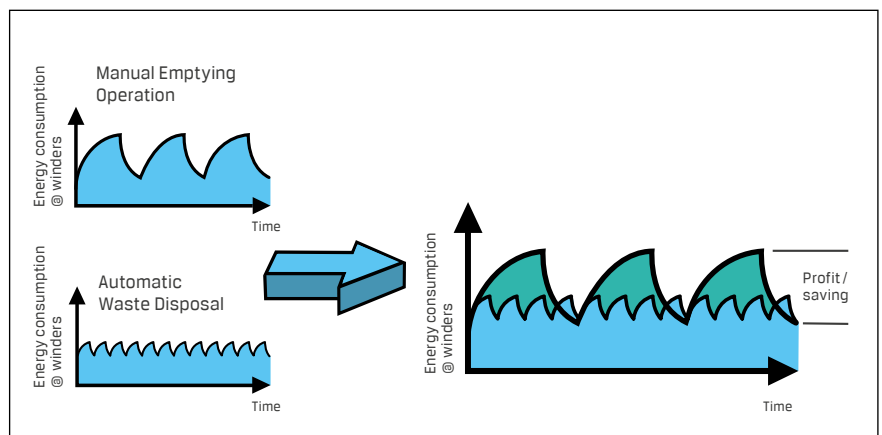
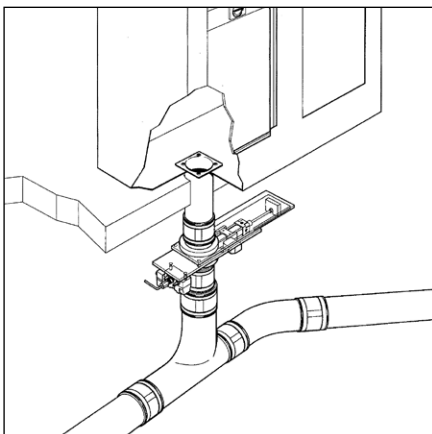
- **clean filter screen of each Winder only guarantees a constant negative pressure, which is essential to produce high quality yarn with best efficiency results**
- **energy consumption at Winder**
 - clean screen filter: low energy
 - covered screen filter: higher energy
- **risky factors (unreliability of labor) need to be reduced at high investment production machines**
- **intermediate waste storage in the mill disturbs your primary material flow**
- **manual emptying of waste results in interruption of production**



Disposal Logistics for Winders

Complete Solution with CVS

- ✓ solving logistic issues from place of origin until waste room.
- ✓ the winders need not to be stopped during automatic disposal with CVS as the aeration valve stabilizes the required underpressure in the winder(chamber).
- ✓ production increase due to no shut off time of robots during emptying cycle.
- ✓ reduction of energy consumption at production machines (e.g. frequency converter – controlled winders, etc. according to customer measurements approx. 5%!).
- ✓ secured efficiency by controlled frequent emptying of yarn chambers guarantees constant air management at winders
- ✓ practical free programmable and easy extendable controls designed to help solve disposal problems.
- ✓ waste is centrally collected and can be further processed (compacting, etc.).



Steinemann

CENTRAL VACUUM SYSTEMS

ConVacc AG
Wilerstrasse 2180
CH-9230 Flawil
Switzerland

Tel. +41 71 394 14 14
Fax +41 71 394 14 83
www.steinemann-cvs.ch
info@steinemann-cvs.ch